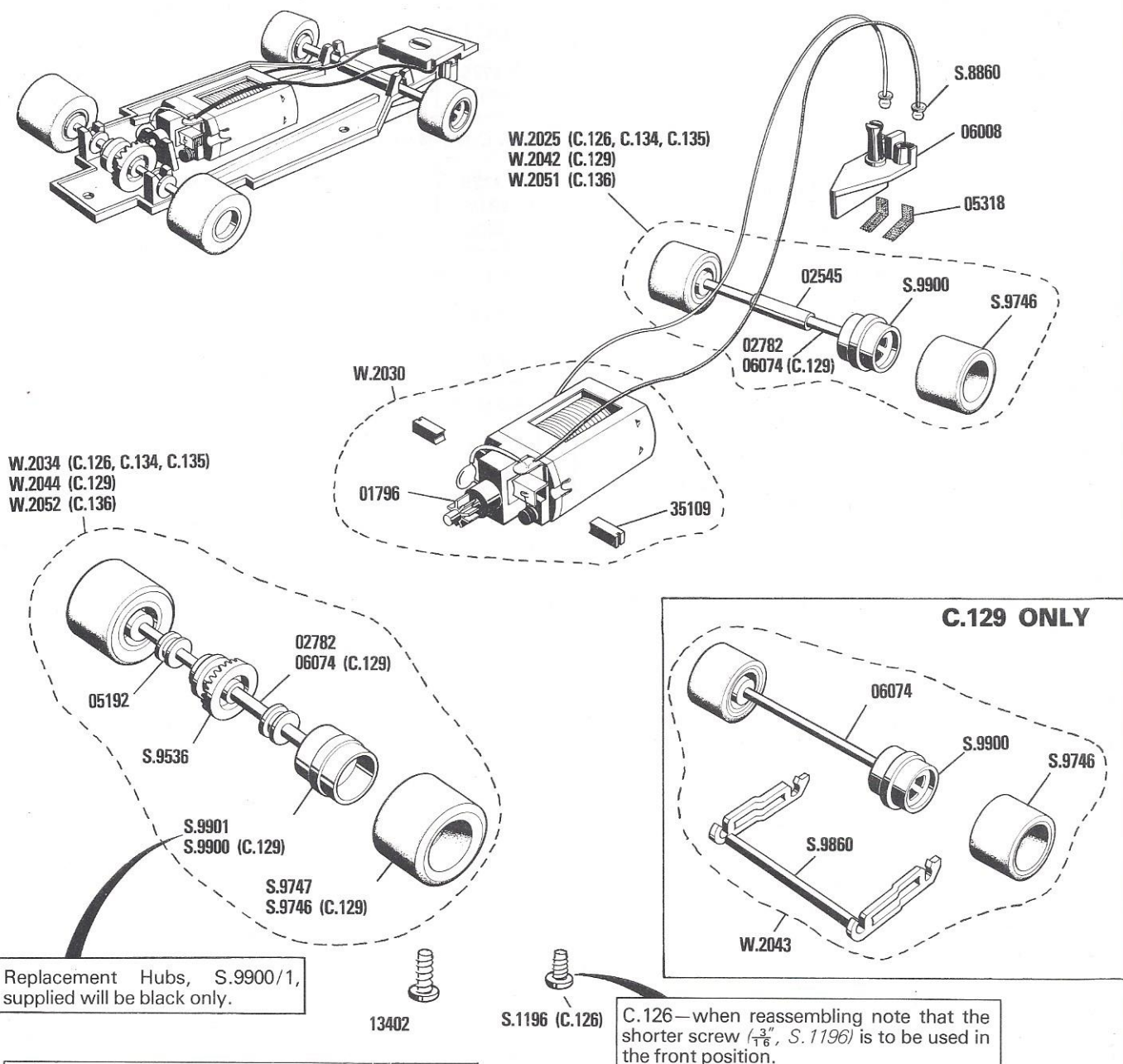


- C.126 Lotus 77**
- C.129 March Ford 771**
- C.134 Elf Renault Turbo RS-01**
- C.135 Elf Tyrrell 008**
- C.136 Ferrari 312 T3**

As produced from 1977.

To release top half of body from underpan remove all screws on underside of body.

Views show car in "upright" position. When reassembling ensure that wires from motor to guide blade are as shown.



Modifications are made to models from time to time. If a spare part is required which does not coincide with the illustration, a full description should be given and, if necessary, a sketch or sample should accompany the order.

- C.126 Lotus 77**  
**C.129 March Ford 771**  
**C.134 Elf Renault Turbo RS-01**  
**C.135 Elf Tyrrell 008**  
**C.136 Ferrari 312 T3**

Ref. No.	Item
<b>W.2025</b>	Axle Assembly—Front (C.126, C.134, C.135) .....
<b>W.2030</b>	Motor/Wire Lead Assembly .....
<b>W.2034</b>	Axle Assembly—Rear (C.126, C.134, C.135) .....
<b>W.2042</b>	Axle Assembly—Front (C.129) .....
<b>W.2043</b>	Axle/Frame Assembly—2nd Rear Axle (C.129) .....
<b>W.2044</b>	Axle Assembly—1st Rear Axle (C.129) ...
<b>W.2051</b>	Axle Assembly—Front (C.136) .....
<b>W.2052</b>	Axle Assembly—Rear (C.136) .....
<b>S.1196</b>	Body Screw $\frac{3}{16}$ " (C.126, front) .....
<b>S.8860</b>	Eyelet .....
<b>S.9536</b>	Contrate Gear .....
<b>S.9746</b>	Tyre—Front (All models) .....
	—Rear (C.129, both Axles) .....
<b>S.9747</b>	Tyre—Rear (C.126, C.134, C.135, C.136) ..
<b>S.9860</b>	Frame—2nd Rear Axle (C.129) .....
<b>S.9900</b>	Hub—Front (All models) .....
	—Rear (C.129, both Axles) .....
<b>S.9901</b>	Hub—Rear (C.126, C.134, C.135, C.136) ..
<b>01796</b>	Motor Pinion .....
<b>02545</b>	Front Axle Spacer .....
<b>02782</b>	Axle—(C.126, C.134, C.135, C.136) .....
<b>05192</b>	Rear Axle Bearing .....
<b>05318</b>	Pick-up Braid .....
<b>06008</b>	Guide Blade .....
<b>06074</b>	Axle—(C.129) .....
<b>13402</b>	Body Screw $\frac{1}{4}$ " .....
<b>35109</b>	Carbon Brush .....

## Items not illustrated

Bodies are supplied complete with Drivers Heads, Tail Vanes, Air Intakes, etc. W.1126 and W.1129 also include Body Screws.

<b>05967</b>	Drivers Head (All models) .....
--------------	---------------------------------

### For C.126 Lotus 77

<b>W.1126</b>	Body Assembly Complete .....
<b>S.9715</b>	Tail Vane .....

### For C.129 March Ford 771

<b>W.1129</b>	Body Assembly Complete .....
<b>S.9874</b>	Tail Vane .....
<b>S.9875</b>	Air Intake .....

### For C.134 Renault RS-01

<b>W.1134</b>	Body Assembly (excluding screws. Four 13402 required) .....
<b>L.5176</b>	Tail Vane .....

### For C.135 Elf Tyrrell 008

<b>W.1135</b>	Body Assembly (excluding screws. Four 13402 required) .....
<b>L.5181</b>	Tail Vane .....

### For C.136 Ferrari 312 T3

<b>W.1136</b>	Body Assembly (excluding screws. Four 13402 required) .....
<b>L.5185</b>	Tail Vane .....

## Notes

### ROVEX Service Centre

ALBERT STREET, RAMSGATE,  
KENT, CT11 9HD, ENGLAND.